



Simply Better Connections

ATEN VanCryst™

**VC486**

12G-SDI to HDMI Converter  
User Manual

## Compliance Statements

---

### FEDERAL COMMUNICATIONS COMMISSION INTERFERENCE STATEMENT

This equipment has been tested and found to comply with the limits for a Class A digital device, pursuant to Part 15 of the FCC Rules. These limits are designed to provide reasonable protection against harmful interference when the equipment is operated in a commercial environment. This equipment generates, uses, and can radiate radio frequency energy and, if not installed and used in accordance with the instruction manual, may cause harmful interference to radio communications. Operation of this equipment in a residential area is likely to cause harmful interference in which case the user will be required to correct the interference at his own expense.

The device complies with Part 15 of the FCC Rules. Operation is subject to the following two conditions: (1) this device may not cause harmful interference, and (2) this device must accept any interference received, including interference that may cause undesired operation.

#### FCC Caution

Any changes or modifications not expressly approved by the party responsible for compliance could void the user's authority to operate this equipment.

#### Warning

Operation of this equipment in a residential environment could cause radio interference.

#### Achtung

Der Gebrauch dieses Geräts in Wohnumgebung kann Funkstörungen verursachen.



### KCC Statement

유선 제품용 / A 급 기기 (업무용 방송 통신 기기)  
이 기기는 업무용 (A 급) 전자파적합기기로서 판매자 또는 사용자는 이  
점을 주의하시기 바라며, 가정 외의 지역에서 사용하는 것을 목적으로  
합니다.

### **HDMI Trademark Statement**

The terms HDMI, HDMI High-Definition Multimedia Interface, and the HDMI Logo are trademarks or registered trademarks of HDMI Licensing Administrator, Inc.



### **RoHS**

This product is RoHS compliant.

## About this Manual

---

This user manual is provided to help you get the most from the VC486 unit. It covers all aspects of installation, configuration, and operation. An overview of the information found in the manual is provided below.

**Chapter 1, *Introduction*** introduces you to the 12G-SDI to HDMI Converter. Its purpose, features, installation considerations, and panel components are presented and described.

**Chapter 2, *Hardware Setup*** describes the steps that are necessary to quickly and safely set up your installation.

**Chapter 3, *Operation*** explains the audio channel selection using the audio channel switch and how to remote manage and control tasks via the ATEN VC486 Configuration Software.

**Chapter 4, *The Firmware Upgrade Utility*** explains the source input operation using the source switch pushbutton and RS-232 commands and its limitations.

**Appendix** provides a list of safety instructions and precautions, contact information for ATEN technical support, product specifications, and other technical information.


---

### Note:

- ◆ Read this manual thoroughly and follow the installation and operation procedures carefully to prevent any damage to the unit or any connected devices.
  - ◆ ATEN regularly updates its product documentation for new features and fixes. For an up-to-date VC486 documentation, visit <http://www.aten.com/global/en/>
-

## **Conventions**

This manual uses the following conventions:

- `Monospaced` Indicates text that you should key in.
- [ ] Indicates keys you should press. For example, [Enter] means to press the **Enter** key. If keys need to be chorded, they appear together in the same bracket with a plus sign between them: [Ctrl+Alt].
  - 1. Numbered lists represent procedures with sequential steps.
  - ◆ Bullet lists provide information, but do not involve sequential steps.
  - > Indicates selecting the option (on a menu or dialog box, for example), that comes next. For example, Start > Run means to open the *Start* menu, and then select *Run*.
  -  Indicates critical information.

## Package Contents

---

- ◆ 1 VC486 12G-SDI to HDMI Converter
- ◆ 1 power adapter
- ◆ 1 HDMI LockPro
- ◆ 4 foot pads
- ◆ 1 user instructions

---

**Note:** Make sure that all of the components are present and in good order. If anything is missing or was damaged in shipping, contact your dealer.

---

## Product Information

---

For information about all ATEN products and how they can help you connect without limits, visit ATEN on the Web or contact an ATEN Authorized Reseller. Visit ATEN on the Web for a list of locations and telephone numbers:

International	<a href="http://www.aten.com">http://www.aten.com</a>
North America	<a href="http://www.aten-usa.com">http://www.aten-usa.com</a>

## User Information

---

### Online Registration

Be sure to register your product at our online support center:

International	<a href="http://eservice.aten.com">http://eservice.aten.com</a>
---------------	---

### Telephone Support

For telephone support, call this number:

International	886-2-8692-6959
China	86-400-810-0-810
Japan	81-3-5615-5811
Korea	82-2-467-6789
North America	1-888-999-ATEN ext 4988 1-949-428-1111

## **User Notice**

All information, documentation, and specifications contained in this manual are subject to change without prior notification by the manufacturer. The manufacturer makes no representations or warranties, either expressed or implied, with respect to the contents hereof and specifically disclaims any warranties as to merchantability or fitness for any particular purpose. Any of the manufacturer's software described in this manual is sold or licensed *as is*. Should the programs prove defective following their purchase, the buyer (and not the manufacturer, its distributor, or its dealer), assumes the entire cost of all necessary servicing, repair and any incidental or consequential damages resulting from any defect in the software.

The manufacturer of this system is not responsible for any radio and/or TV interference caused by unauthorized modifications to this device. It is the responsibility of the user to correct such interference.

The manufacturer is not responsible for any damage incurred in the operation of this system if the correct operational voltage setting was not selected prior to operation. PLEASE VERIFY THAT THE VOLTAGE SETTING IS CORRECT BEFORE USE.



# Table of Contents

---

Compliance Statements . . . . .	ii
About this Manual . . . . .	iv
Conventions . . . . .	v
Package Contents . . . . .	vi
Product Information . . . . .	vii
User Information . . . . .	vii
Online Registration . . . . .	vii
Telephone Support . . . . .	vii
User Notice . . . . .	viii
Table of Contents . . . . .	ix

## 1. Introduction

Overview . . . . .	1
Features . . . . .	2
Planning the Installation . . . . .	3
Requirements . . . . .	3
Considerations . . . . .	3
Components . . . . .	4
Front View . . . . .	4
Rear View . . . . .	5

## 2. Hardware Setup

Mounting the VC486 Unit . . . . .	7
Rack Mounting . . . . .	7
Connecting the VC486 Unit . . . . .	8

## 3. Operation

Selecting the Audio Channel . . . . .	9
SDI Audio Selection . . . . .	9
ATEN VC486 Configuration Software . . . . .	11
Installing the ATEN VC486 Configuration Software . . . . .	11
Connecting the VC486 to Your PC . . . . .	13
Opening the ATEN VC486 Configuration Software . . . . .	14
Page Components . . . . .	15
Top Menu . . . . .	16
Device List . . . . .	17
Side Menu . . . . .	17

## 4. The Firmware Upgrade Utility

Introduction . . . . .	23
Downloading the Firmware Upgrade Package . . . . .	23
Preparation . . . . .	24
Starting the Upgrade . . . . .	25

Upgrade Succeeded .....	27
Upgrade Failed .....	27
Firmware Upgrade Recovery .....	28

**Appendix**

Safety Instructions .....	29
General .....	29
Rack Mounting .....	31
Technical Support .....	32
International .....	32
North America .....	32
Specifications .....	33
Supported SDI Resolutions .....	35
Limited Warranty .....	38

# Chapter 1

## Introduction

### Overview

---

The VC486 is a 12G-SDI to HDMI Converter that converts HD/3G/6G/12G-SDI input signals to an HDMI output in real time. It supports various transmission distances depending on different SDI formats, including 45 m (12G-SDI), 60 m (6G-SDI), 90 m (3G-SDI), and 150 m (HD-SDI), offering the flexibility for professional video projects. The VC486 is a perfect choice for applications such as using HDMI televisions as SDI broadcast monitors, and connecting to video projectors.

## Features

---

- ◆ Converts HD/3G/6G/12G-SDI input signals to an HDMI output in real time
- ◆ SDI signal re-clocked for high signal quality
- ◆ Supports SDI standard SMPTE-292/424/425-3/2081/2082
- ◆ Supports an SDI distance of up to 45 m (12G-SDI), 60 m (6G-SDI), 90 m (3G-SDI) and 150 m (HD-SDI)
- ◆ Supported SDI formats:
  - ◆ HD-SDI (SMPTE 292M, 296M, up to 1.485 Gbps)
  - ◆ 3G-SDI (SMPTE 424M, 425M level A and B, up to 2.97 Gbps)
  - ◆ 6G-SDI (SMPTE 2081-1, SMPTE 2081-10, up to 6 Gbps)
  - ◆ 12G-SDI (SMPTE 2081-1, SMPTE 2081-10, SMPTE 2082-1 and SMPTE 2082-10, up to 12 Gbps)
- ◆ Supports analog stereo audio output with RCA (R/L) connector
- ◆ Automatic detection of input video signals
- ◆ Analog Audio channel selection with a 8-step rotary switch
- ◆ ATEN VC486 Configuration Software for advanced configuration
- ◆ Locking power connector

## Planning the Installation

### Requirements

Prepare the following before installing the VC486 unit:

- ◆ 1 SDI source service
- ◆ 1 SDI source output device
- ◆ 2 SDI cables
- ◆ 1 HDMI cable
- ◆ 1 HDMI display
- ◆ 1 speakers

### Considerations

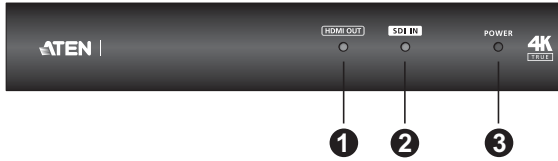
- ◆ The maximum transmission distance varies at different parts of the transmission:

Connection	Interface	Distance
SDI source to the VC486	12G – SDI	45 m
	6G – SDI	60 m
	3G – SDI	90 m
	HD – SDI	150 m
VC486 to the display	12G – SDI	45 m
	6G – SDI	60 m
	3G – SDI	90 m
	HD – SDI	150 m
	HDMI	3 m

# Components

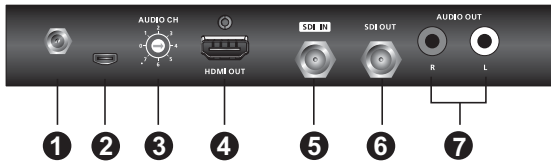
---

## Front View



No.	Component	Description
1	HDMI output status LED	The LED lights green to indicate the HDMI signal is stable.
2	SDI input status LED	The LED lights green to indicate the SDI signal is stable.
3	power LED	The LED lights green to indicate the unit is receiving power.

## Rear View



No.	Component	Description
1	power jack	Connects to the power adapter.
2	firmware upgrade port	Connects to a USB Micro-B cable for firmware upgrade. See <i>The Firmware Upgrade Utility</i> , page 23.
3	audio channel switch	Use the switch to set an audio channel from 0 - 7. See <i>Selecting the Audio Channel</i> , page 9.
4	HDMI out port	Connects to the HDMI in port on the display device.
5	SDI input port	Connects to the SDI out port on the source device.
6	SDI output port	Connects to the SDI in port on the display device.
7	audio output ports	Connects to the audio in port on a speaker.

This Page Intentionally Left Blank



## Chapter 2

# Hardware Setup



1. Please review the safety information regarding the placement of this device in *Safety Instructions*, page 29.
2. Do not power on the VC486 until all the necessary hardware is connected.

### **Mounting the VC486 Unit**

---

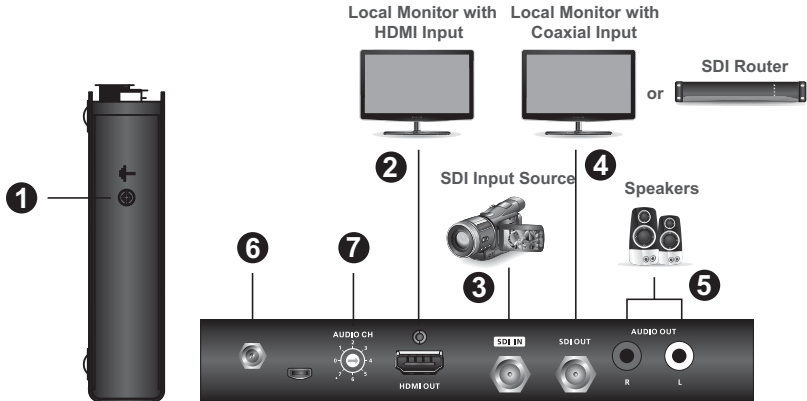
You can mount the VC486 on a rack.

#### **Rack Mounting**

Use the VE-RMK 1U Rack Mount Kit to rack-mount the VC486. For more information about this accessory, go to [www.aten.com/products](http://www.aten.com/products)

## Connecting the VC486 Unit

Follow the steps below to connect the VC486 to a source, and other controls as required.



1. Ground the VC486 by connecting one end of a grounding wire to the Grounding Terminal and the other end to a suitable grounded object. The Grounding Terminal is located on the left side of the unit.

---

**Note:** Do not omit this step. Proper grounding helps to prevent damage to the unit from power surges or static electricity.

---

2. Use an HDMI cable to connect an HDMI-enabled monitor to the HDMI output port on the VC486.
3. Use a coaxial cable to connect an SDI source device to the SDI input port on the VC486.
4. Use a coaxial cable to connect an SDI display device or SDI router to the SDI output port on the VC486.
5. Connect your audio output device (e.g. speakers) to the audio output ports on the VC486.
6. Plug the provided power adapter into an appropriate power source; plug the power adapter cable into the power jack on the VC486.
7. (Optional) To change the SDI audio output channel, use the audio channel switch. Each number on the switch represents two channels, with 0 representing channel 1 and 2, 1 representing channel 3 and 4, etc.
8. Check that the power LED, HDMI output status LED, and SDI input status LED light green to indicate that the VC486 is receiving power and ready to operate.

# Chapter 3 Operation

## Selecting the Audio Channel





---







audio channel switch

Switch the audio channel switch on the VC486 to switch the audio channel from 0 - 7. Each audio channel support 2 analogs, see the table below for more information.

### SDI Audio Selection

Switches	Supported Analog
	1 - 2
	3 - 4
	5 - 6
	7 - 8

Switches	Supported Analog
	9 - 10
	11 - 12
	13 - 14
	15 - 16

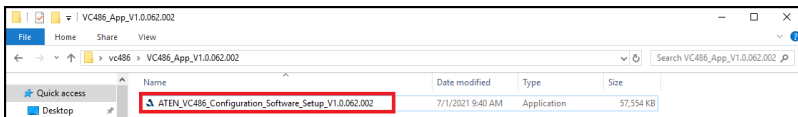
## ATEN VC486 Configuration Software

For advanced settings, such as configuration the VC486's input, output, and audio settings, download and install the ATEN VC486 Configuration Software from the product web page.

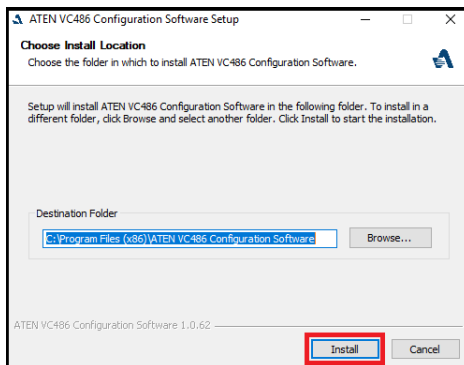
### Installing the ATEN VC486 Configuration Software

To install the ATEN VC486 Configuration Software on your PC, follow the steps below.

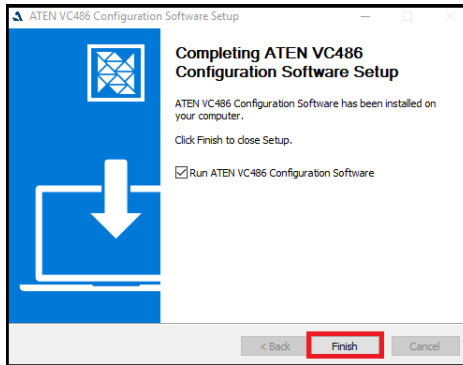
1. Download the ATEN VC486 Configuration Software package from our product web page and unzip the downloaded file.
2. Double-click on the ATEN VC486 Configuration Software app.



3. The ATEN VC486 Configuration Software Setup dialog box appears, and click **Install**.

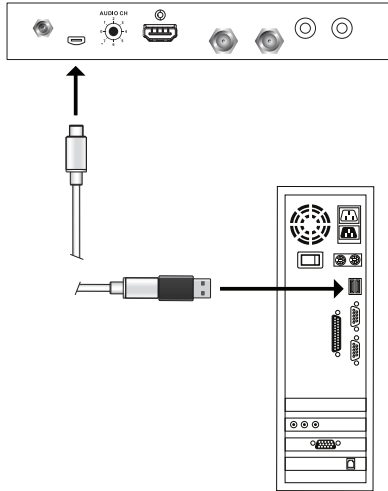


4. Wait for the installation process to complete, and click **Finish**.



## **Connecting the VC486 to Your PC**

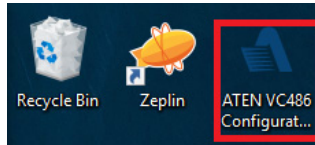
Use a USB Micro-B to USB Type-A cable to connect a USB Type-A port on your computer, and the other end to the *firmware upgrade port* on your VC486.



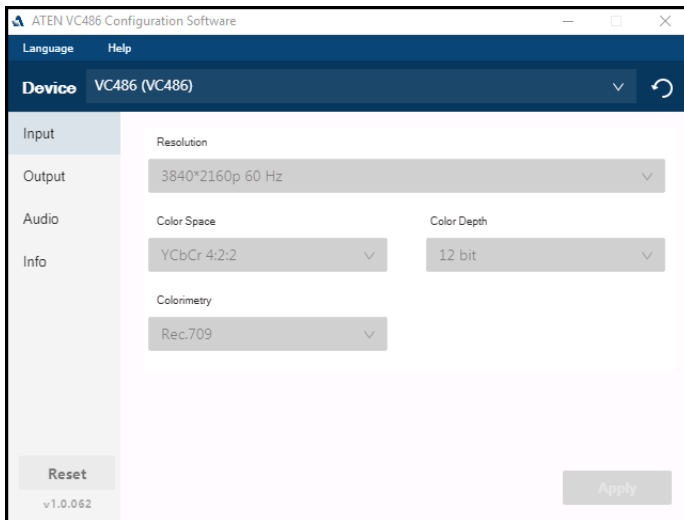
## **Opening the ATEN VC486 Configuration Software**

Before you open the ATEN VC486 Configuration Software, make sure the VC486 is connected to your PC.

1. Locate and double-click the ATEN VC486 Configuration Software icon on your desktop.

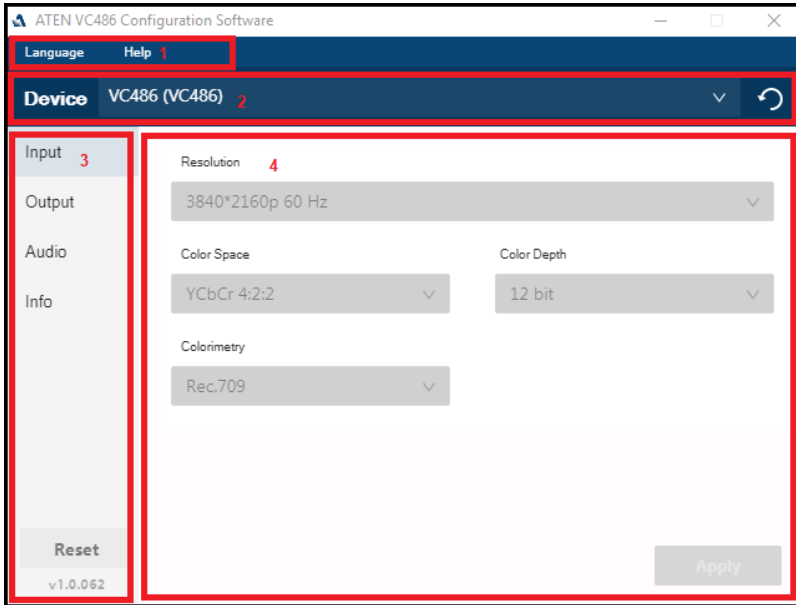






2. The ATEN VC486 Configuration Software main page appears.





## Page Components

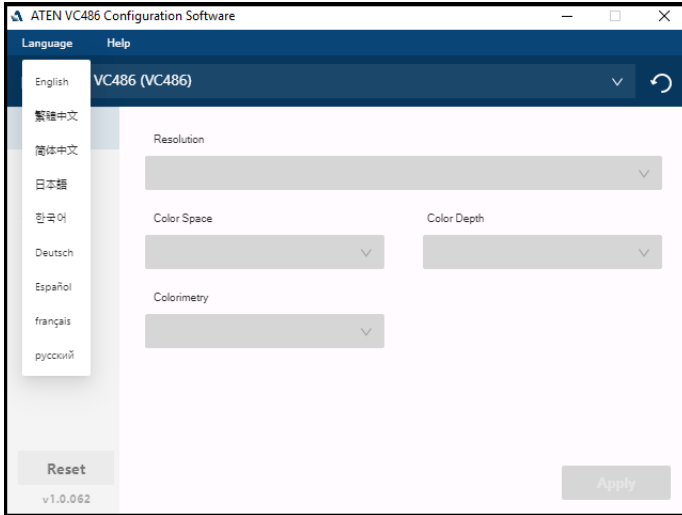


No.	Component	Description
1	Top Menu	<ul style="list-style-type: none"> <li>◆ Language: Click to select a preferred language. See <i>Language</i>, page 16.</li> <li>◆ Help: Click to gain access to the user manual, FAQ, and available firmware updates. See <i>Help</i>, page 16.</li> </ul>
2	Device List	Click  to select an available VC486 from your PC for configuration, or click  to refresh the device list. See <i>Device List</i> , page 17.
3	Side Menu	Click the side menu to configure the VC486's input, output, audio, and info settings. See <i>Side Menu</i> , page 17.
4	Settings Page	Allows you to configure settings for the VC486. The content varies depending on the selected side menu. When the configuration has been made, the Apply button changes from grey  to green  .

## Top Menu

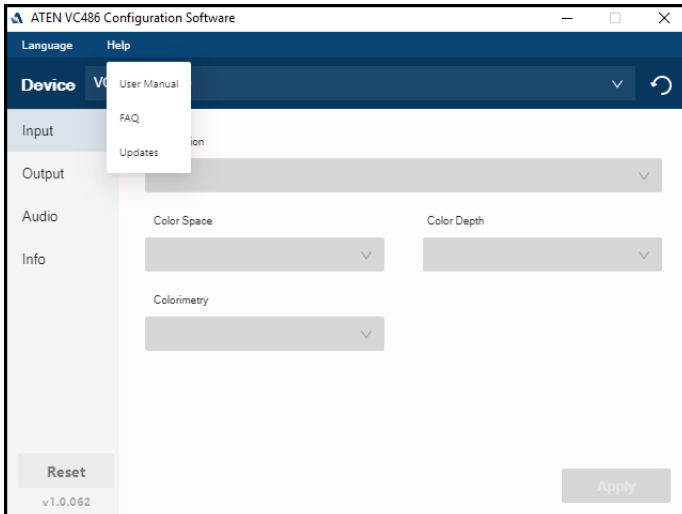
### Language

Click to select a language between English, Chinese TW, Chinese CN, Japanese, Korean, German, Spanish, French, and Russian.





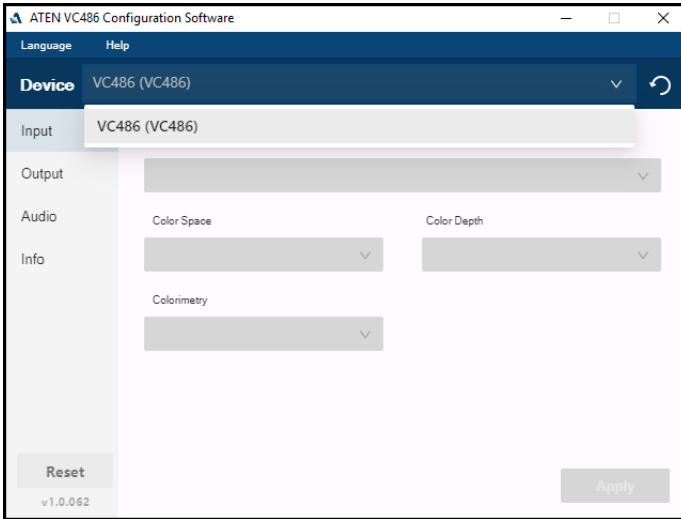
### Help

Click to access to the most up-to-date user manual, FAQ, and available firmware updates.



## Device List

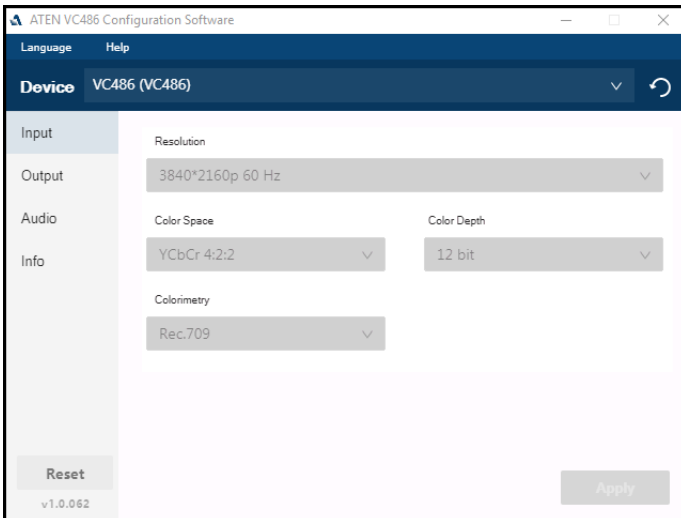
In the device list field, it allows you to select an available VC486 for configuration by clicking , or click  to refresh the device list.



## Side Menu

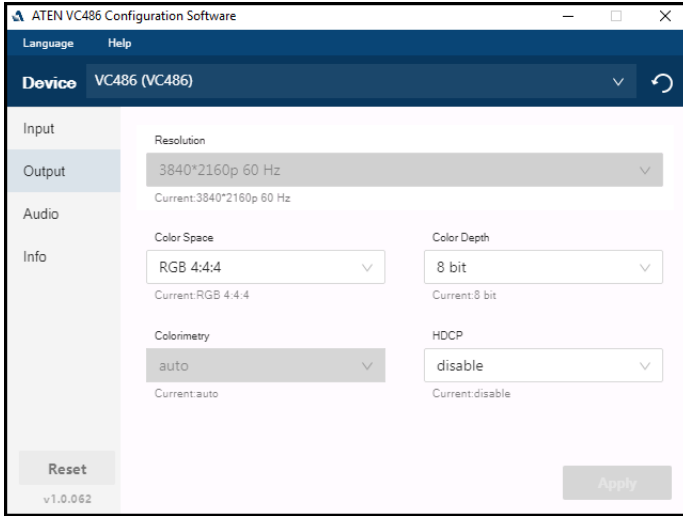
The Side Menu allows you to configure input, output, audio settings, and device name for the selected VC486.


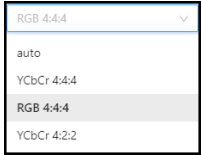

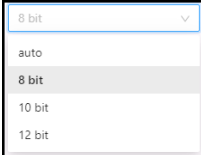

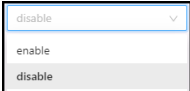
### Input



## Output

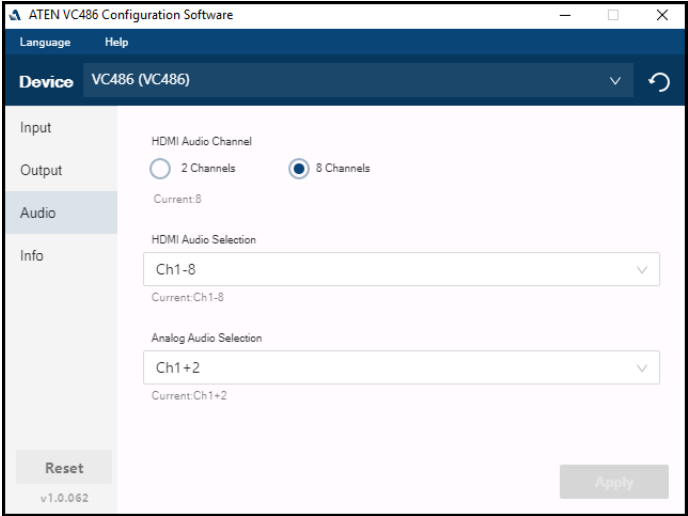
In the output configuration page, it allows you to configure the color space, color depth, and HDCP settings.


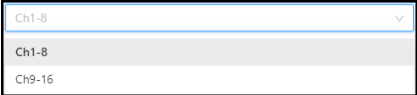
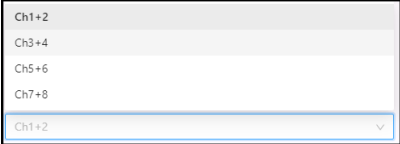


Component	Description
Color Space	Sets a color space for the selected VC486 by clicking  . 
Color Depth	Sets a color depth for the selected VC486 by clicking  . 
HDCP	Sets to enable or disable HDCP by clicking  . 

## Audio

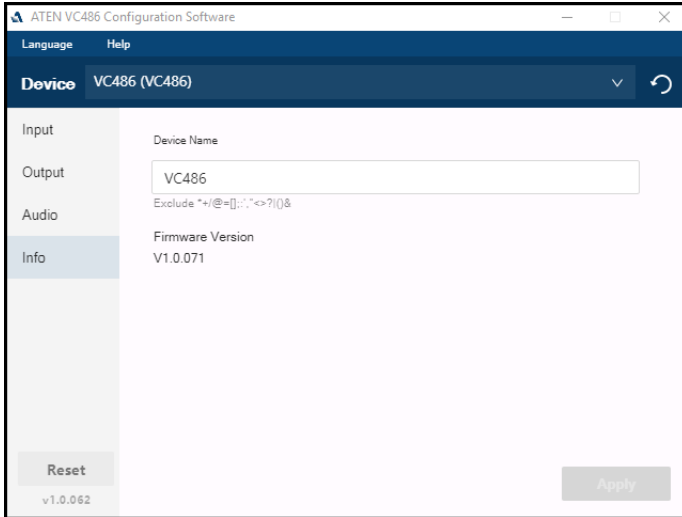
In the audio configuration page, it allows you to configure the HDMI audio channel, HDMI audio selection, and analog audio selection settings.



Component	Description
HDMI Audio Channel	Sets the HDMI audio channel between 2 Channels and 8 Channels. 
HDMI Audio Selection	Sets an HDMI audio channel selection for the selected VC486 by clicking  .
Analog Audio Selection	Sets an analog audio channel selection for the selected VC486 by clicking  .

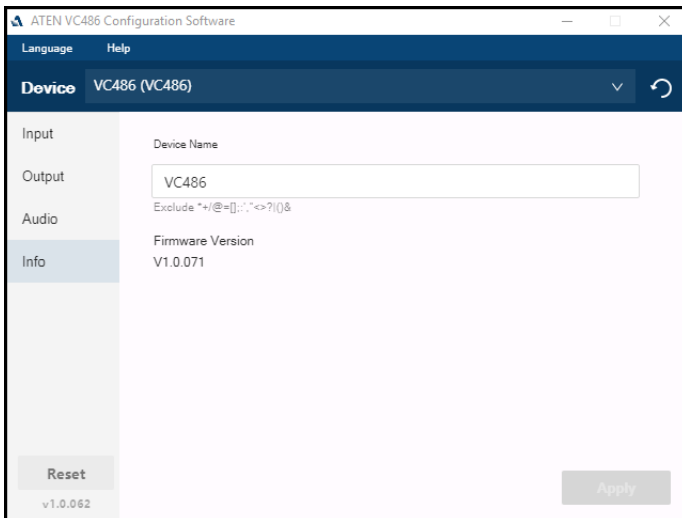
## Info

In the info configuration page, it allows you to configure the device name for the selected VC486, and view its firmware version.

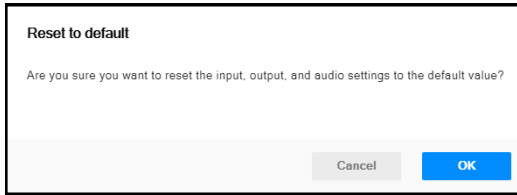


## Reset

To reset the selected VC486 to its factory default settings, click **Reset**.



A warning message appears, and click **OK**.



This Page Intentionally Left Blank



# Chapter 4

## The Firmware Upgrade Utility

### Introduction

---

The purpose of the Windows-based Firmware Upgrade Utility is to provide an easy process for upgrading the VC486. The program comes as part of a Firmware Upgrade Package that is specific for each device.

As new firmware versions become available, new firmware upgrade packages are posted on our website. Check the website regularly to find the latest information and packages.

### Downloading the Firmware Upgrade Package

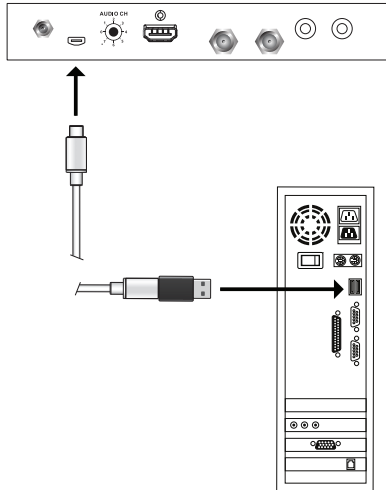
To download the firmware upgrade package:

1. On our Website go to: *Download - Firmware* and choose the device model, or from the VC486 product page under the *Resources* tab, select *Firmware*. A list of available firmware upgrade packages appears.
2. Choose the firmware upgrade package that you wish to install (usually the most recent) and download it to your computer.

## Preparation

To prepare for the firmware upgrade, do the following:

1. Unplug the VC486's power adapter.
2. Use a USB Micro-B to USB Type-A cable to connect a USB Type-A port on your computer, and the other end to the *firmware upgrade port* on your VC486.



3. Plug the power adapter into power jack on the VC486.
4. If successful, the SDI, HDMI, and power status LEDs will start to flash. Now, you can start the upgrade process as explained on the next page.

---

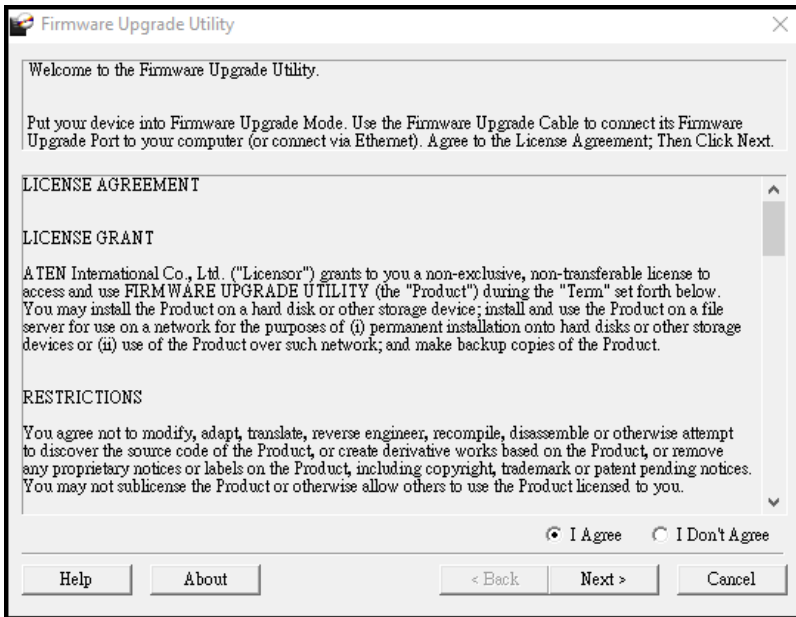
## Starting the Upgrade

---

To upgrade the firmware:

1. Run the downloaded firmware upgrade package file either by double-clicking the file icon, or by opening a command line and entering the full path to it.

The *Firmware Upgrade Utility* welcome screen appears:



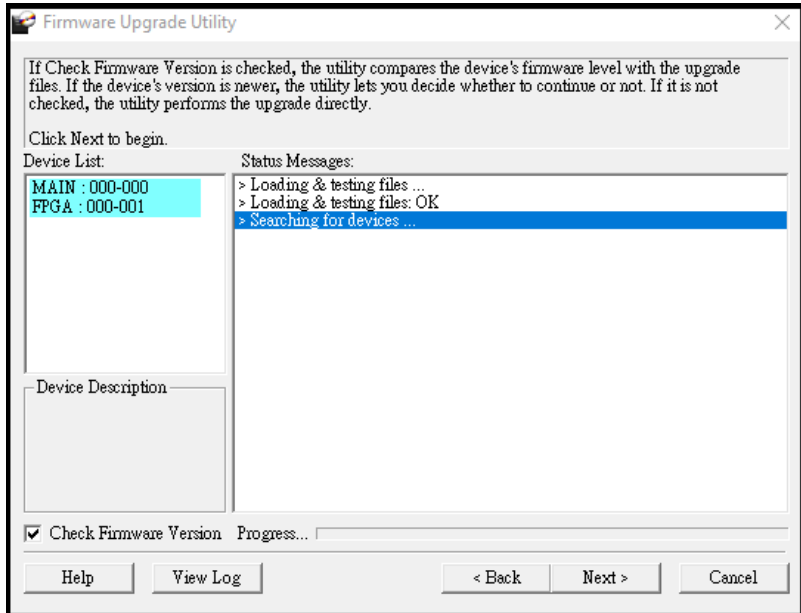
---

**Note:** The screens shown in this section are for reference only. The wording and layout of the actual screens put up by the *Firmware Upgrade Utility* may vary slight from these examples.

---

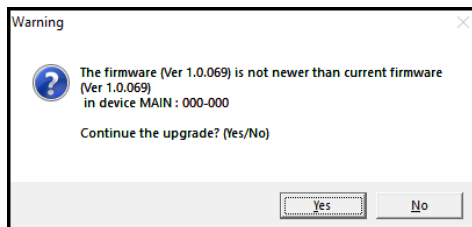
2. Read and *Agree* to the License Agreement (click the **I Agree** radio button).

- Click **Next** to continue. The *Firmware Upgrade Utility* main screen appears. The devices capable of being upgraded are listed in the *Device List* panel:



- Click **Next** to perform the upgrade. The Status LEDs SDI, HDMI, and power will flash while the upgrade is in process.

If you enabled *Check Firmware Version*, the Utility compares the device's firmware level with that of the upgrade files. If it finds that the device's version is higher than the upgrade version, it brings up a dialog box informing you of the situation and gives you the option to continue or cancel.

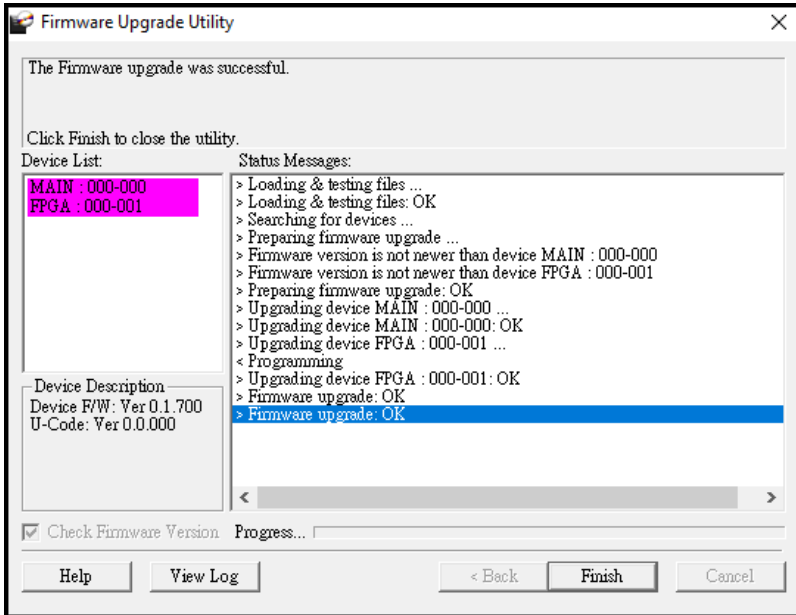


If you didn't enable *Check Firmware Version*, the Utility installs the upgrade files without checking whether they are a higher level, or not.

Status messages appear in the *Status Messages* panel, and the progress toward completion is shown on the *Progress* bar.

## Upgrade Succeeded

After the upgrade has completed, all port LEDs will stop flashing and a screen appears to inform you that the procedure was successful:



Click **Finish** to close the *Firmware Upgrade Utility*.

## Upgrade Failed

If the *Upgrade Succeeded* screen doesn't appear, it means that the upgrade failed to complete successfully. See the next section, *Firmware Upgrade Recovery*, for how to proceed.

## Firmware Upgrade Recovery

---

There are three conditions that call for firmware upgrade recovery:

- ◆ When a firmware upgrade is manually aborted.
- ◆ When the mainboard firmware upgrade fails.
- ◆ When the I/O firmware upgrade fails.

To perform a firmware upgrade recovery, do the following:

1. Power off the device.
2. Connect the USB Micro-B to USB Type-A cable to the USB Type-A port on your computer, and the other end to the *firmware upgrade port* of your VC486.
3. Repeat the upgrade procedure.

## Safety Instructions

---

### General

- ◆ This product is for indoor use only.
- ◆ Read all of these instructions. Save them for future reference.
- ◆ Follow all warnings and instructions marked on the device.
- ◆ Do not place the device on any unstable surface (cart, stand, table, etc.). If the device falls, serious damage will result.
- ◆ Do not use the device near water.
- ◆ Do not place the device near, or over, radiators or heat registers.
- ◆ The device cabinet is provided with slots and openings to allow for adequate ventilation. To ensure reliable operation, and to protect against overheating, these openings must never be blocked or covered.
- ◆ The device should never be placed on a soft surface (bed, sofa, rug, etc.) as this will block its ventilation openings. Likewise, the device should not be placed in a built in enclosure unless adequate ventilation has been provided.
- ◆ Never spill liquid of any kind on the device.
- ◆ Unplug the device from the wall outlet before cleaning. Do not use liquid or aerosol cleaners. Use a damp cloth for cleaning.
- ◆ The device should be operated from the type of power source indicated on the marking label. If you are not sure of the type of power available, consult your dealer or local power company.
- ◆ To prevent damage to your installation it is important that all devices are properly grounded.
- ◆ Do not allow anything to rest on the power cord or cables. Route the power cord and cables so that they cannot be stepped on or tripped over.
- ◆ Position system cables and power cables carefully; Be sure that nothing rests on any cables.
- ◆ Never push objects of any kind into or through cabinet slots. They may touch dangerous voltage points or short out parts resulting in a risk of fire or electrical shock.

- ◆ Do not attempt to service the device yourself. Refer all servicing to qualified service personnel.
- ◆ If the following conditions occur, unplug the device from the wall outlet and bring it to qualified service personnel for repair.
  - ◆ The power cord or plug has become damaged or frayed.
  - ◆ Liquid has been spilled into the device.
  - ◆ The device has been exposed to rain or water.
  - ◆ The device has been dropped, or the cabinet has been damaged.
  - ◆ The device exhibits a distinct change in performance, indicating a need for service.
  - ◆ The device does not operate normally when the operating instructions are followed.
- ◆ Only adjust those controls that are covered in the operating instructions. Improper adjustment of other controls may result in damage that will require extensive work by a qualified technician to repair.



## **Rack Mounting**

- ◆ Before working on the rack, make sure that the stabilizers are secured to the rack, extended to the floor, and that the full weight of the rack rests on the floor. Install front and side stabilizers on a single rack or front stabilizers for joined multiple racks before working on the rack.
- ◆ Always load the rack from the bottom up, and load the heaviest item in the rack first.
- ◆ Make sure that the rack is level and stable before extending a device from the rack.
- ◆ Use caution when pressing the device rail release latches and sliding a device into or out of a rack; the slide rails can pinch your fingers.
- ◆ After a device is inserted into the rack, carefully extend the rail into a locking position, and then slide the device into the rack.
- ◆ Do not overload the AC supply branch circuit that provides power to the rack. The total rack load should not exceed 80 percent of the branch circuit rating.
- ◆ Make sure that all equipment used on the rack – including power strips and other electrical connectors – is properly grounded.
- ◆ Ensure that proper airflow is provided to devices in the rack.
- ◆ Ensure that the operating ambient temperature of the rack environment does not exceed the maximum ambient temperature specified for the equipment by the manufacturer.
- ◆ Do not step on or stand on any device when servicing other devices in a rack.

## Technical Support

---

### International

- ◆ For online technical support – including troubleshooting, documentation, and software updates: <http://support.aten.com>
- ◆ For telephone support, see *Telephone Support*, page vii:

### North America

Email Support		<a href="mailto:support@aten-usa.com">support@aten-usa.com</a>
Online Technical Support	Troubleshooting Documentation Software Updates	<a href="http://www.aten-usa.com/support">http://www.aten-usa.com/support</a>
Telephone Support		1-888-999-ATEN ext 4988

When you contact us, please have the following information ready beforehand:

- ◆ Product model number, serial number, and date of purchase
- ◆ Your computer configuration, including operating system, revision level, expansion cards, and software
- ◆ Any error messages displayed at the time the error occurred
- ◆ The sequence of operations that led up to the error
- ◆ Any other information you feel may be of help

## Specifications

Function	VC486
<b>Switches</b>	
Audio Selection	1 x Rotary Switch (8-steps)
<b>Control</b>	
USB	1 X Micro USB (Firmware Upgrade)
<b>Video Input</b>	
Interfaces	1 x SDI (BNC Connector, Inter-locked Socket)
Impedance	75 $\Omega$
<b>Video Output</b>	
Interfaces	1 x HDMI Type A Female (Black) 1 x SDI (BNC Connector, Inter-locked Somet)
Impedance	HDMI: 100 $\Omega$ SDI: 75 $\Omega$
<b>Video</b>	
Max. Data Rate	12 Gpbs
Supported Resolutions	720p50, 720p59.94, 720p60 1080p23.98, 1080p24, 1080p25, 1080p29.97, 1080p30, 1080p50, 1080p59.94, 1080p60 , 1080PsF25, 1080PsF29.97, 1080PsF30 1080i50, 1080i59.94, 1080i60 2K DCI 23.98p, 2K DCI 24p, 2K DCI 25p, 2K DCI 25PsF: 2160p23.98, 2160p24, 2160p25, 2160p29.97, 2160p30, 2160p50, 2160p59.94, 2160p60, 4K DCI 23.98p 4K DCI 24p, 4K DCI 25p
Max. Distance	[12G-SDI] up to 45 m [6G-SDI] up to 60 m [3G-SDI] up to 90 m [HD-SDI] up to 150 m HDMI up to 3 m (3840 x 2160 @ 60Hz)
<b>Audio</b>	
Output	1 x HDMI Type A Female (Black) 2 x RCA Connector Female (R/L, Analog Audio)
Format	Compliance with HDMI and Audio 2 CH

Function	VC486
<b>SDI Formats</b>	
SDI Formats	HD-SDI (SMPTE 292M, 296M, up to 1.485 Gbps) 3G-SDI (SMPTE 424M, 425M Level A and B, up to 2.97 Gbps) 6G-SDI (SMPTE 2081-1, SMPTE 2081-10, up to 6 Gbps) 12G-SDI (SMPTE 2081-1, SMPTE 2081-10, SMPTE 2082-1, and SMPTE 2082-10, up to 12Gbps)
<b>Connectors</b>	
Power	1 x DC 5V 3A, Lockable
<b>Power</b>	
Consumption	DC5V; 5.69W; 27BTU
<b>Environmental</b>	
Operating Temperature	0 - 40°C
Storage Temperature	-20 - 60°C
Humidity	0 - 80% RH, Non-Condensing
<b>Physical Properties</b>	
Housing	Metal
Weight	0.65 kg (1.43 lb)
Dimensions (L x W x H)	18.20 x 12.96 x 2.87 cm (7.17 x 5.10 x 1.13 in.)

## Supported SDI Resolutions

---

The VC486 supports the following SDI resolutions:

Video Format	Resolution	Color Space	Scan Frequency (Hz)
HD	720p	YCbCr-422-10bit	25
			29.97
			30
			50
			59.94
			60
	1080i		50
			59.94
			60
	1080sF		23.98
			24
			25
			29.97
			30
	1080p		23.98
			24
25			
29.97			
30			

Video Format	Resolution	Color Space	Scan Frequency (Hz)
3GA	1080p	YCbCr-422-10bit	47.95
			48
			50
			59.94
			60
		YCbCr-444-10bit	23.98
		RGB-444-10bit	24
		YCbCr-444-12bit	25
		RGB-444-12bit	29.97
		YCbCr-422-12bit	30
	720p	YCbCr-444-10bit	25
		RGB-444-10bit	29.97
			30
			50
			59.94
			60
	1080i	YCbCr-444-10bit	50
RGB-444-10bit		59.94	
YCbCr-444-12bit		60	
RGB-444-12bit			
YCbCr-422-12bit			
1080sF	YCbCr-444-10bit	23.98	
	RGB-444-10bit	24	
	YCbCr-444-12bit	25	
	RGB-444-12bit	29.97	
	YCbCr-422-12bit	30	

Video Format	Resolution	Color Space	Scan Frequency (Hz)
3GB-DL	1080p	YCbCr-422-10bit	47.95 48 50 59.94 60
		YCbCr-444-10bit	23.98
		RGB-444-10bit	24
		YCbCr-444-12bit	25
		RGB-444-12bit	29.97
		YCbCr-422-12bit	30
	1080i	YCbCr-444-10bit	50
		RGB-444-10bit	59.94
		YCbCr-444-12bit	60
		RGB-444-12bit	
	1080sF	YCbCr-444-10bit	23.98
		RGB-444-10bit	24
YCbCr-444-12bit		25	
RGB-444-12bit		29.97	
YCbCr-422-12bit		30	
6G	1080p	YCbCr-444-10bit	50
		RGB-444-10bit	59.94 60
	2160p	YCbCr-422-10bit	23.98 24 25 29.97 30
12G	2160p	YCbCr-422-10bit	47.95 48 50 59.94 60
		YCbCr-444-10bit	23.98
		RGB-444-10bit	24
		YCbCr-444-12bit	25
		RGB-444-12bit	29.97
	YCbCr-422-12bit	30	

## Limited Warranty

---

ATEN warrants its hardware in the country of purchase against flaws in materials and workmanship for a Warranty Period of two [2] years (warranty period may vary in certain regions/countries) commencing on the date of original purchase. This warranty period includes the [LCD panel of ATEN LCD KVM switches](#). Select products are warranted for an additional year (see [A+ Warranty](#) for further details). Cables and accessories are not covered by the Standard Warranty.

### **What is covered by the Limited Hardware Warranty**

ATEN will provide a repair service, without charge, during the Warranty Period. If a product is defective, ATEN will, at its discretion, have the option to (1) repair said product with new or repaired components, or (2) replace the entire product with an identical product or with a similar product which fulfills the same function as the defective product. Replaced products assume the warranty of the original product for the remaining period or a period of 90 days, whichever is longer. When the products or components are replaced, the replacing articles shall become customer property and the replaced articles shall become the property of ATEN.

To learn more about our warranty policies, please visit our website:  
<http://www.aten.com/global/en/legal/policies/warranty-policy/>

© Copyright 2021 ATEN® International Co., Ltd.  
Released: 2021-08-24

ATEN and the ATEN logo are registered trademarks of ATEN International Co., Ltd. All rights reserved. All other brand names and trademarks are the registered property of their respective owners.